

EGFR(L747-P753)S

Catalog Number: 26287

Gene Symbol: EGFR/HER1/ERBB1

Description: Anti-EGFR (L747-P753)S Mouse Monoclonal Antibody

Background: B-Raf is a member of the Raf family of Ser/Thr protein kinases. It functions downstream of Ras to regulate the MAP kinase signaling pathway. Mutations in the BRAF gene cause diseases. Inherited mutations in BRAF cause cardiofaciocutaneous syndrome. Acquired mutations in BRAF have been found in cancers

Immunogen: A synthetic peptide from the internal region of EGFR which includes the mutation of (L747-P753) S, human origin.

Tested Applications: ELISA, WB, IF, IHC

Recommended Dilutions:

ELISA:	1:1000-1:5000
WB:	1:500-1:1000
IF:	1:50-1:100
IHC:	1:25-1:100

Concentration: 1 mg/ml

Host: Mouse

Clonality: Monoclonal

Isotype: IgG

Purity: Purified from ascites

Format: Liquid

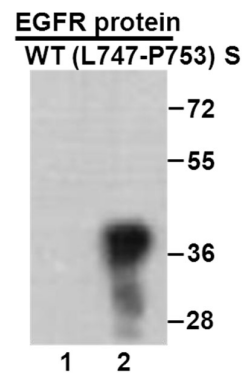
Preservative: No

Constituents: PBS (without Mg²⁺ and Ca²⁺), pH7.4, 150 mM NaCl, 50% glycerol

Species Reactivity: Recognizes EGFR (L747-P753) S, but not wild type EGFR protein from vertebrates.

Storage Conditions: Store at -20°C. Avoid repeated freezing and thawing

Western blot:



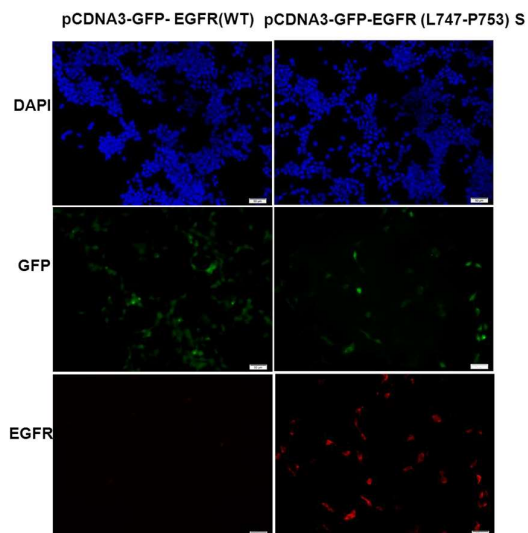
WB: Anti- EGFR (L747-P753) S mAb

Western blot analysis of recombinant EGFR(L747-P753) S and wild type proteins.

Purified His-tagged EGFR (L747-P753) S protein (702-987) and wild-type protein (702-987) was blotted with anti- EGFR (L747-P753)S mouse antibody (Cat. # 26287).

FOR RESEARCH USE ONLY. NOT FOR DIAGNOSTIC APPLICATIONS

Immunofluorescence:



Immunofluorescence of cells expressing EGFR proteins with anti-EGFR (L747-P753) S antibody.

HEK293T cells were transfected with pCDNA3-GFP-EGFR (WT) plasmid (left column) or pCDNA3-GFP-EGFR (L747-P753) S plasmid (right column), then fixed and stained with anti-EGFR (L747-P753) S monoclonal antibody (Cat. # 26287).

FOR RESEARCH USE ONLY. NOT FOR DIAGNOSTIC APPLICATIONS